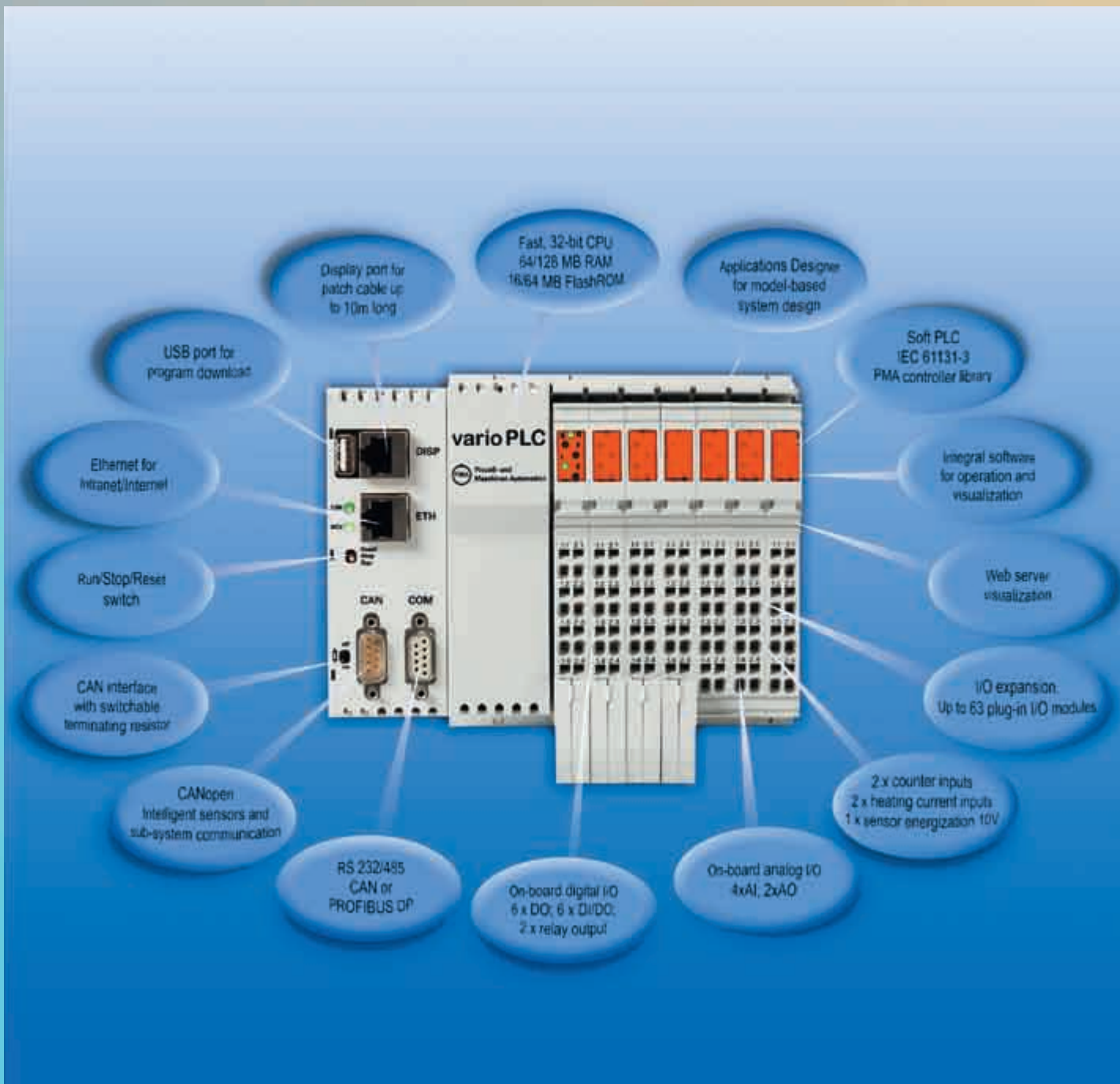


More than a PLC - varioPLC !



At a glance

varioPLC

- Compact PLC with display driver
- IEC 61131-3 programming
- Integrated loop control functions
- Comprehensive on-board I/O
- Extension bus for vario I/O modules
- Direct connection for colour 'touch' display
- Communication via:
 - ★ CAN and Ethernet
 - ★ (Profibus optional)

varioDISP

- Choice of 5,7-inch and 12,1-inch screens
- Touch operation
- Particularly shallow panel-mount housings
- Suitable for direct mounting on machine
- OEM versions on request

varioEC_{modular}

- Based on varioPLC and varioDISP
- Ready to use packages including application software extruder automation, i.e.: for extruder retrofitting

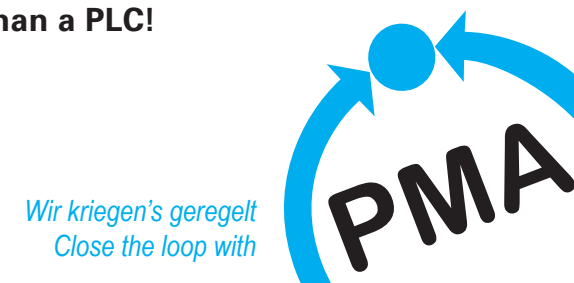
PMA Prozeß- und Maschinen-Automation GmbH
Miramstraße 87
34123 Kassel/Germany
Tel./Fax: +49 (0)561 505-1307 / -1710
E-mail: mailbox@pma-online.de
www.pma-online.de

G081457 9/2008

Automation solutions based on varioPLC



More than a PLC!



Two components: one aim!

The central element for an automation system: varioPLC



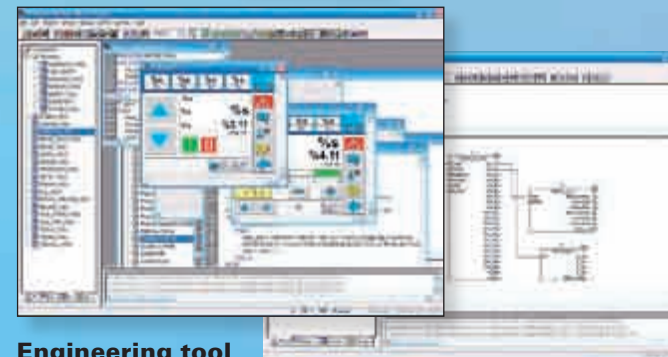
- Compact, robust hardware
- Programming acc. to IEC 61131-3 (CoDeSys)
- Soft PLC runtime (realtime operation)
- Multitasking possible
- Built-in process control with accustomed PMA quality
- Convenient debugging and commissioning tools

- Fully integrated graphical visualization system
 - ★ with direct access to the variables of the PLC program.
 - ★ This eliminates the risk of multiple definitions.
 - ★ Versatile functions for creating operating displays
- On-board I/O
 - ★ 4 analog inputs (e.g. measurement values)
 - ★ 2 analog outputs (e.g. controller continuous output)
 - ★ 2 terminals for sensor energization (e.g. strain gauge pressure sensors)
 - ★ 2 heating current inputs (e.g. for cyclic heater monitoring)
 - ★ 6 digital inputs (e.g. for error messages)
 - ★ 6 digital outputs (for enabling signals, etc.)
- Extension bus for vario I/O modules
 - ★ 8-channel temperature module
 - ★ Analog and digital I/Os
- Direct connection of the display with low-cost standard cable
- Ethernet
- CAN
- Optional: PROFIBUS DP, 2nd CAN, RS485, RS232
- USB port for software update, etc.



Compact solution for measurement & control plus operation/visualization

With modular extensions for customized solutions:
Simply connect the standard modules of the vario I/O system



Engineering tool

CoDeSys in accordance with IEC 61131-3 for sequencing functions and visualization

Choose the most suitable display! varioDISP

Operation and visualization

- ★ Rugged colour displays with 'touch' function
- ★ Hardware designed for mounting close to the machine

Choose the display to suit your needs

- ★ Type: TFT
- ★ Screen size: 5,7-inch or 12,1-inch

Mount it wherever you want to

- ★ 10 m connecting lead with standard patch cable (RJ45)



Very shallow housing – compact installation – for every size

